

PrinterLogic Release Printing™ On Any Device



PrinterLogic's Release Printing Module addresses these issues and increases the security of your existing print environment by securely storing users' print jobs until the user releases the job at the printer. Release Printing from PrinterLogic works with all printer manufacturers, and can be configured to use two different methods: Pull/Follow Printing and Secure Printing.

Pull/Follow Printing

Pull Printing (also known as Follow Printing) enables users to send print jobs via a universal print driver, giving them the ability to pull down that print job at any Pull Printing enabled printer at their discretion. Pull Printing works in all of the following environments: PC/Mac, Mobile and Chromebook.

Secure Printing

Secure Printing allows users to send a print job via a specific printer driver to a single printer, while enabling the user to pull the job down at that particular printer at their discretion. By using the printer's actual driver, all original printer functionality is maintained. Secure Printing is currently available in all PC/Mac environments.

Both **Pull Printing** and **Secure Printing** increase security by requiring the user to release the print job at the physical printer location, using one of the following release mechanisms:

Browser-Based Release

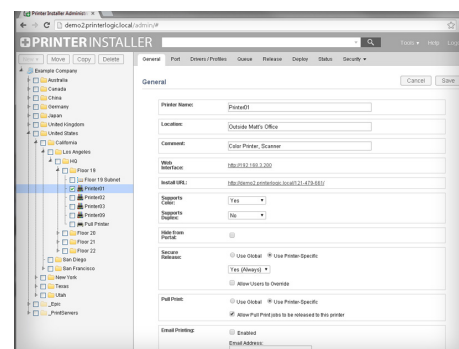
Any device with a browser – including PC, Mac, Chromebook, and any mobile device – can access PrinterLogic's web-based app and release print jobs securely. This mechanism also allows you to place an inexpensive Android or iOS device in dedicated console mode and associate it to printers that don't have built-in consoles. These devices can be attached to or placed near the active printer group and can act as release stations for those printers.

Badge/Card Reader Release

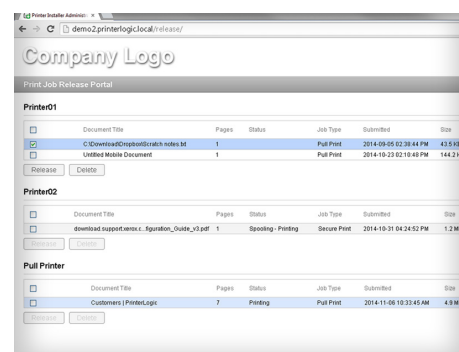
A badge reader is placed at the printer or is native to the printing device. The badge reader integrates with the existing badge system to release the print jobs to the printer associated to the badge.

Printer Console Release

The PrinterLogic app can be installed directly on a printer, enabling users to login and release their print jobs directly on the LCD of the device. This method does not require any additional hardware for supported devices.



Release Printing Administrator



Release Printing Portal

DOWNLOAD A FREE 30-DAY TRIAL at:
www.PrinterLogic.com

PrinterLogic