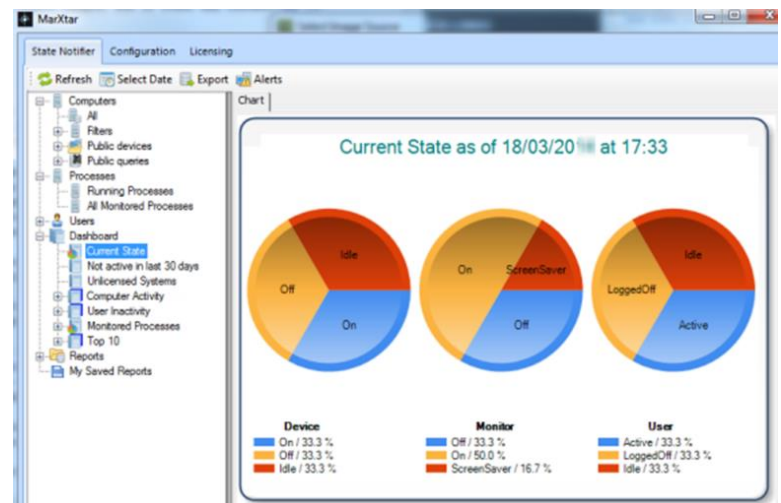


MarXtar State Notifier

Knowledge about your environment is important to making the most effective use of your resources, supporting the business, and making plans using up to date information. State Notifier was designed to give a real time and historical view of the usage patterns within the IT estate. Rather than relying on snapshot information from the more usual inventory/asset scanning products, State Notifier updates your data real time so that any view is a current view of your estate.

State Notifier may also be integrated with the LANDESK and Microsoft SCCM Systems

Management Suites for easy update of inventory data or reporting of State Notifier data. State Notifier is used worldwide by organisations large and small.



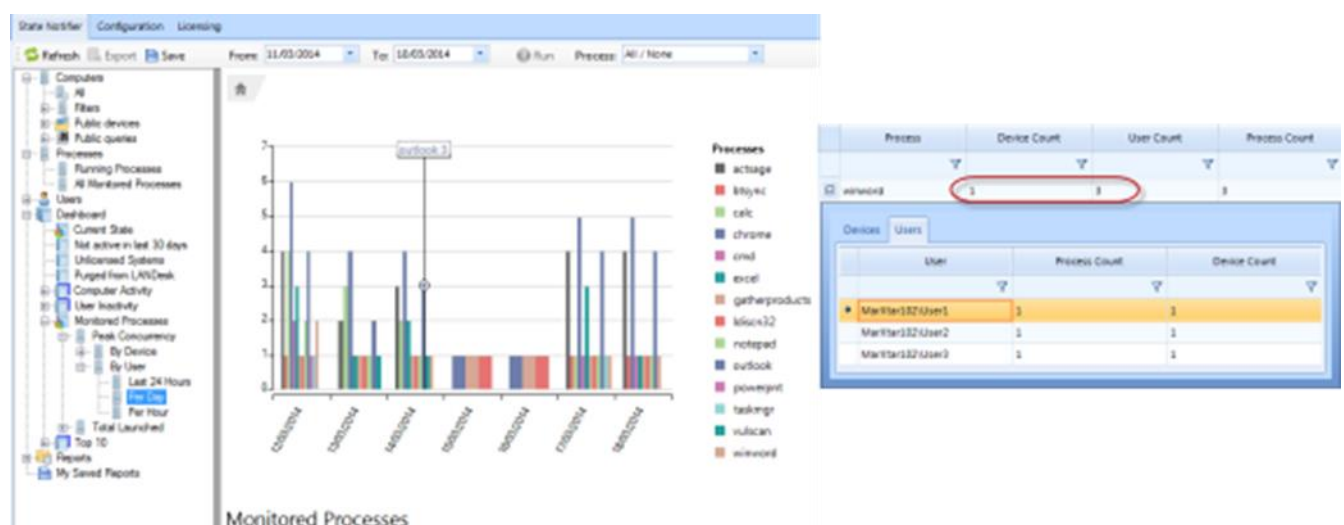
What's New in State Notifier 2.3?

Real-Time & Historical Process Monitoring

Now you can choose any processes that important to your business or that you need to analyse the usage of and map this both real time and historically.

Moving Toward Citrix or Other Thin Environment?

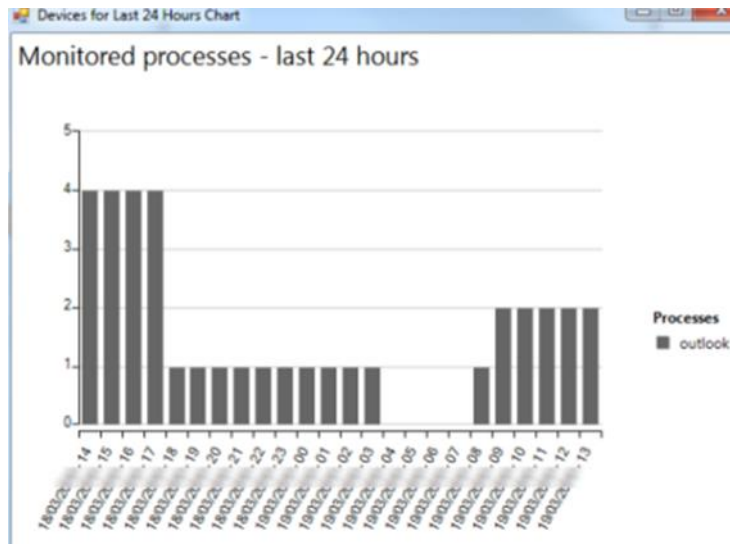
Now you can see the actual usage levels for your applications, including peak concurrency and peak loads.



Planning Service Maintenance?

Understand lowest levels of utilisation to minimise the impact of service maintenance

Understand when scheduled activities take place to analyse distribution

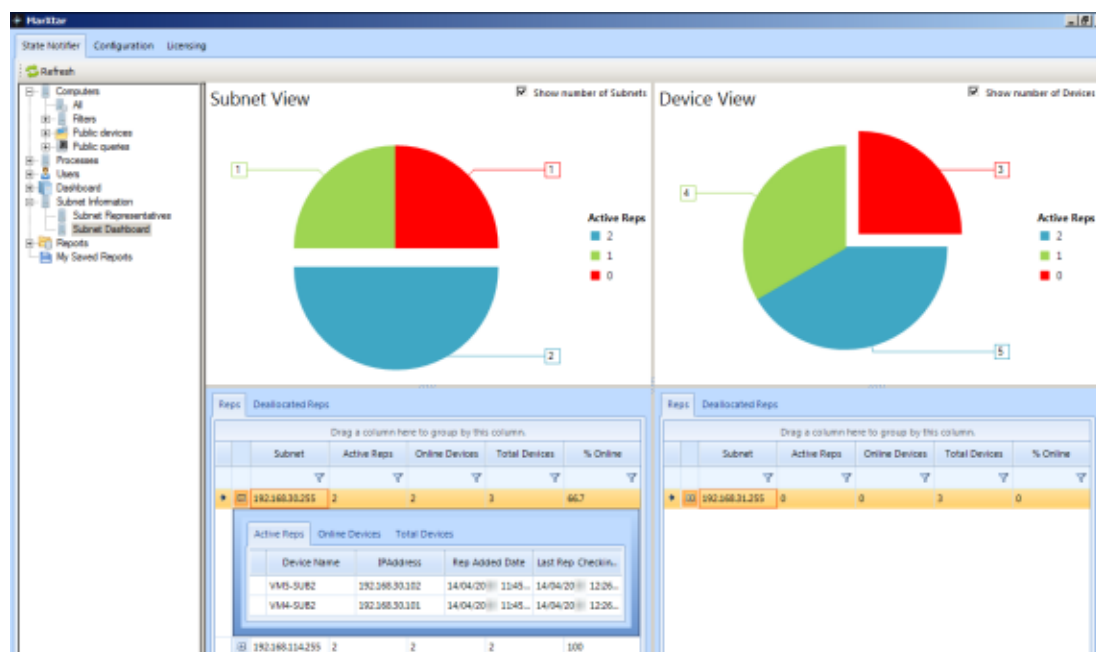


Understand Actual License Utilisation on Shared Applications/Servers

Licenses aren't cheap so knowing how many people are actually using an application rather than just how many have access to it can help in concurrent licence monitoring and also in more accurate assessment of licensing requirements.

Real-Time Subnet Availability Reporting & Representative Selection

Especially important if you are trying to perform remote wake-up of devices, State Notifier now automatically maintains visibility of each remote subnet state as well as dynamically selecting and maintaining a configurable number of subnet representatives. State Notifier Representatives are protected from sleeping or hibernating to maintain this coverage.



Now you can tell how much of your environment could possibly be reached with Wake-On-WAN activities and in addition when integrated with LANDESK, State Notifier will also keep the Multicast Domain Representatives list up-to-date without any manual intervention to improve software distribution coverage.

Runs Stand-Alone or in Integrated Mode

If you have LANDESK or Microsoft SCCM then you can gain the benefits of integration, but if you don't then it doesn't matter as State Notifier can now operate as a stand-alone implementation allowing anyone to gain the benefits.

What State Notifier Does For You

- Real-Time & Historical User Session State? - **Check**
- Real-Time & Historical Device State? - **Check**
- Real-Time & Historical Running Processes? - **Check**
- Real-Time Alerting of State Changes? - **Check**
- Historical Capacity and Peak Usage Analysis? - **Check**

Client Weekly Activity Comparisons

Prove the effectiveness of Power Management policies by demonstrating the actual impact on device behaviours over extended periods of time.

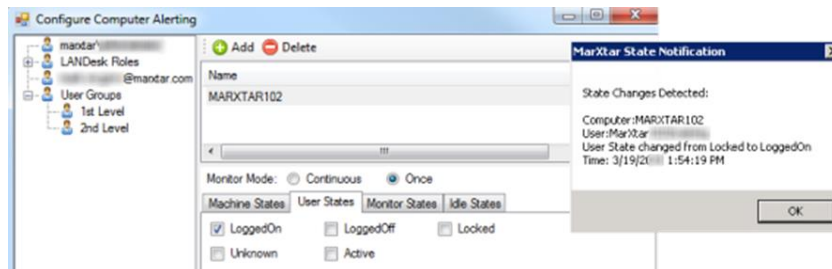
Feature	Stand-Alone	SCCM Integrated	LANDESK Integrated
Real-Time Report of PC Power State	X		
Real-Time Report of Monitor Active State	X		
Real-Time Report of Logged In/Out Status	X		
Real-Time Subnet Availability Report/Charting	X		
Real-Time Report of Running Processes	X		
Lifecycle Management Inventory Data Updates			X
Detection of Non-Reporting Systems (Heartbeat)	X		
MarXtar Management Console	X		
Console Plug-In			X
Graphical Reporting	X		
Report Drill-Down Capability	X		
Historical Trend-Analysis Reports	X		
User-Defined Comparison Periods/Dates	X		
Integration with Lifecycle Management Queries		X	X
Deployable Agent	X	X	X
Purged System Detection			X
Individual System Reports	X		
Dynamically Maintain LANDESK Multicast Domain Representatives			X
MarXtar Wake-On-WAN Integration	X		X



3D Visualisation of Online Activities

Live Alerting

Alert based on any change in device or user state to identify when machines come online, users leave their machines, or when users return to their machines. Make sure you know exactly when a device or user is accessible.



Imagine how much faster your Service Desk response times can be if instant knowledge of user presence or device availability can be provided.

State Notifier Use Cases

System & Service Alerting

Need to know when a device or group of devices goes offline? Need to know when a user leaves or returns to their desk? State Notifier allows alerts to be sent to individuals, groups, or even email to inform you when a device or user session enters a defined state. Now you can get hold of someone when they return to their desk rather than constantly chasing them.

Device & User Session Monitoring

Historical Audit Trail demonstrating when devices were in use and who was using them at the time. Know what devices a user has been on across any period of time.

Power Efficiency & Policy Planning

Do you need power policies? Or if you have policies, are they being effectively followed or enforced? State Notifier lets you see on/sleeping/offline devices at any point in time or a trend over time to both plan and assess need & impact.

System Availability & Usage Analysis

Running Hot Desks and find it hard to work out where you have available systems? With real time data this is simple. Each system you have is an expensive resource, so knowing how much they are being used (or not used) allows you to more efficiently make use of these costly resources.



Try MarXtar State Notifier

If you would like to try State Notifier in your environment please contact a sales representative at sales@marxstar.com or [Download a Trial Version](#) now.